

DATA REPORT

折込広告出稿統計レポート

2015 2

近畿2府4県版

株式会社朝日オリコミ大阪



1

1

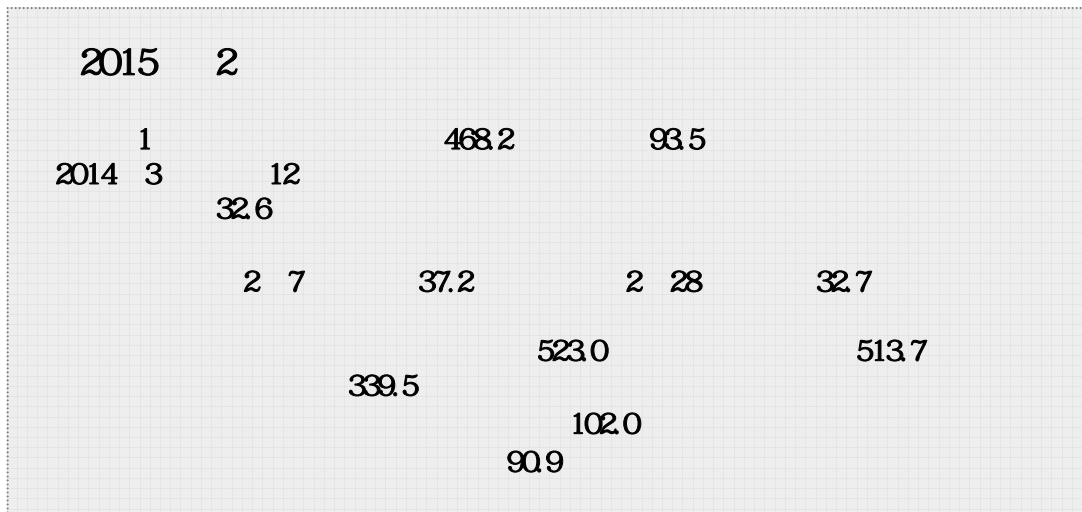
1)

	44	4	9	5	5	7	2	4	3	3	2	

2)

	28	12	2	2

3)

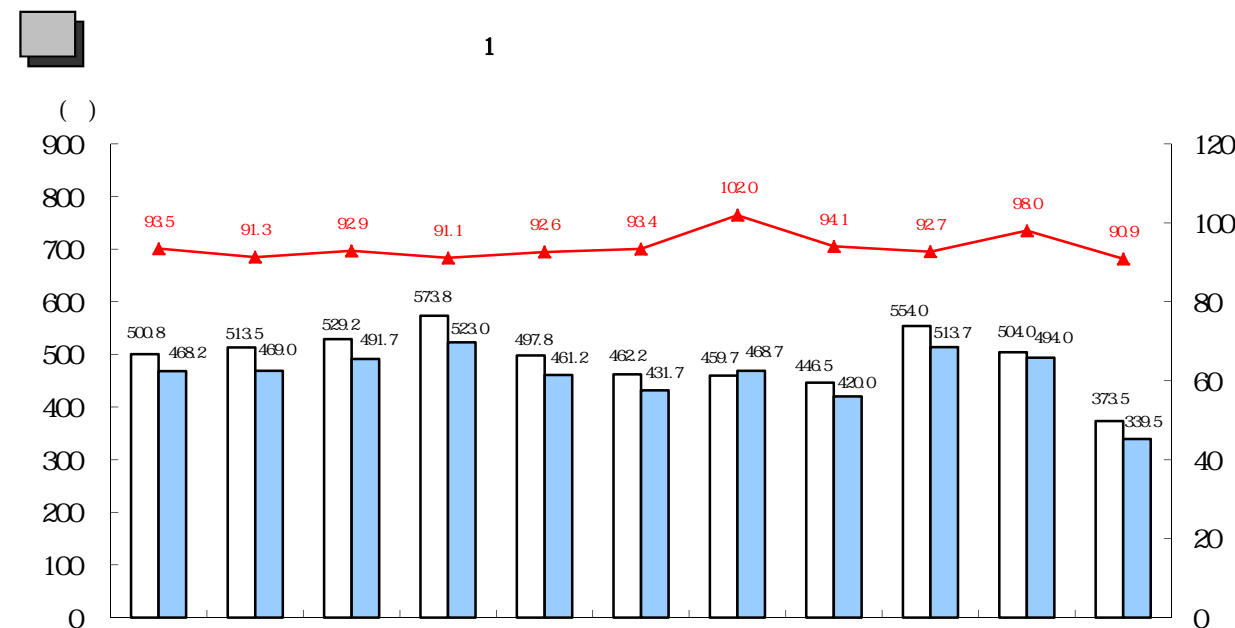
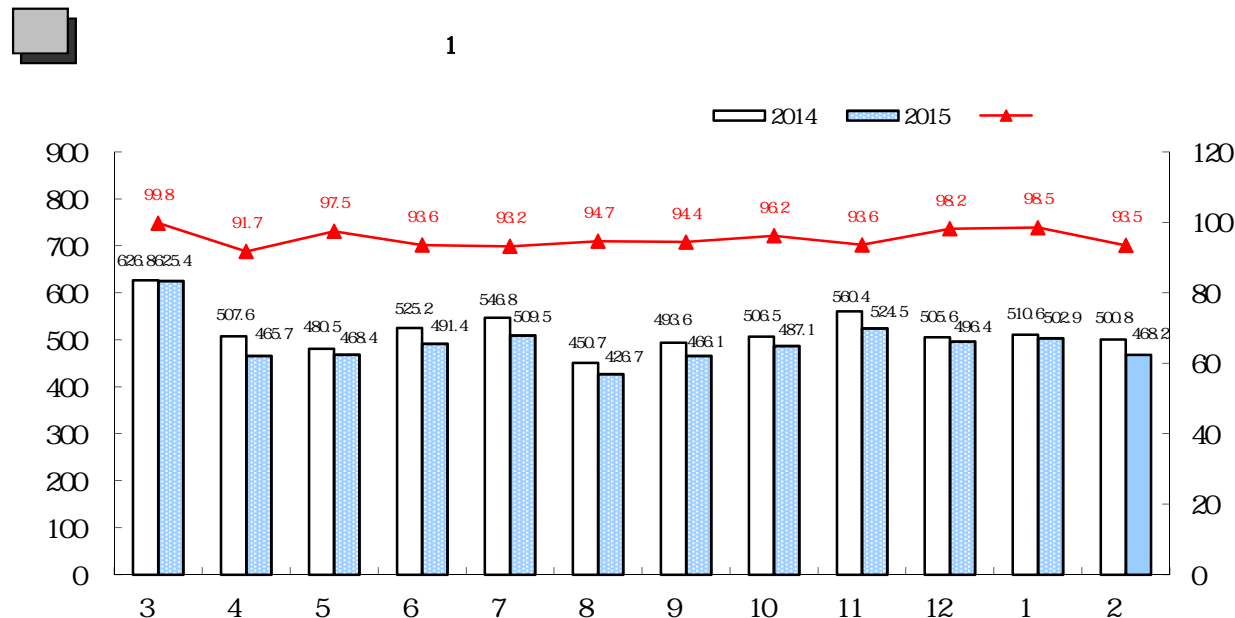


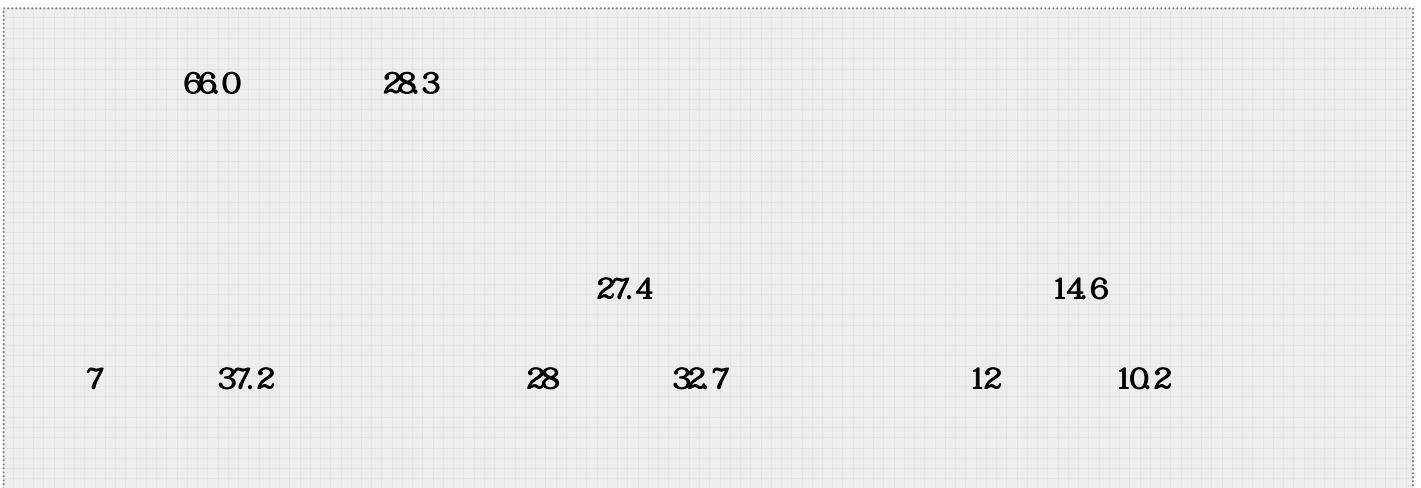
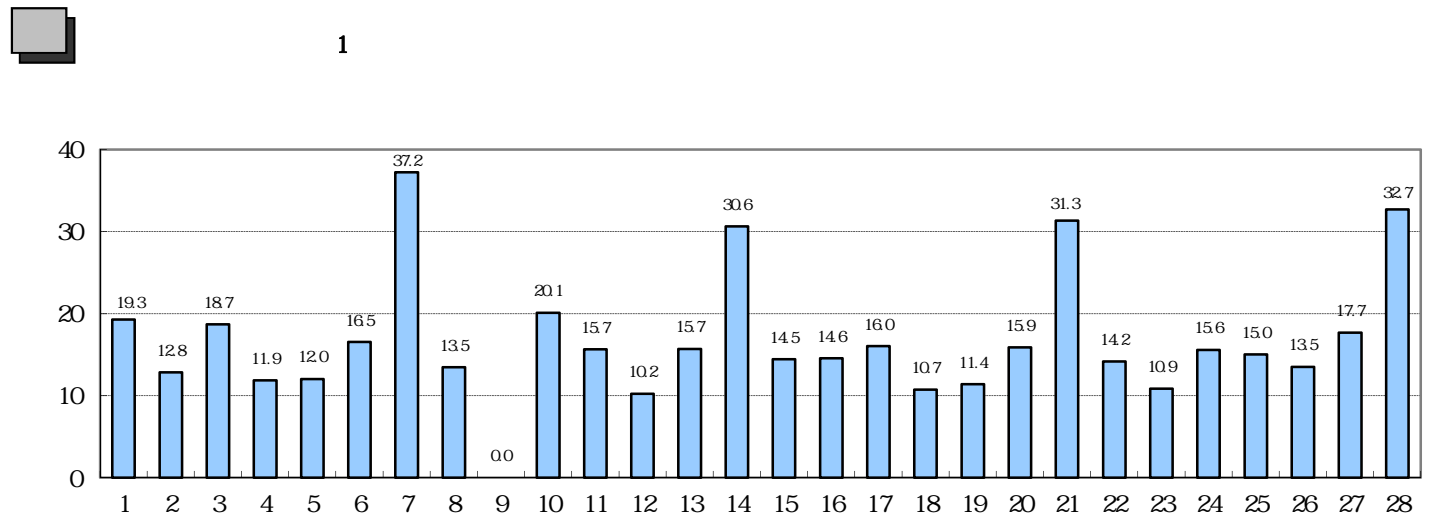
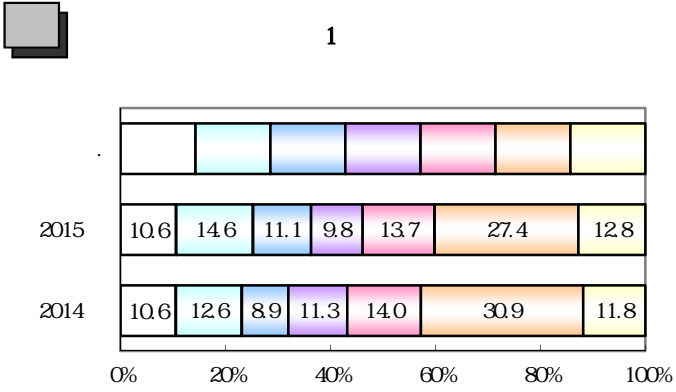
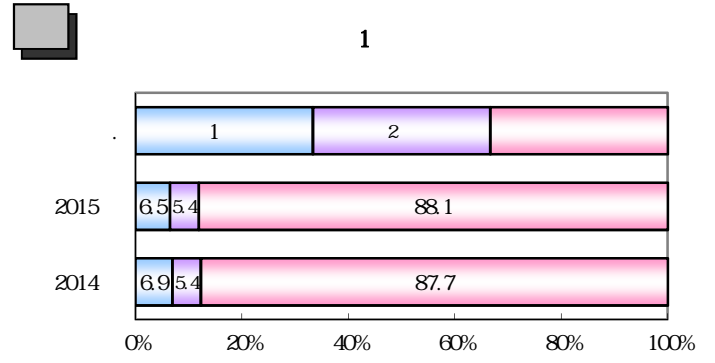
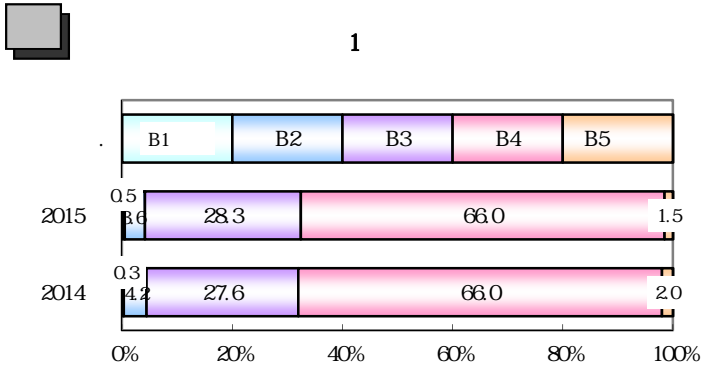
2015 2

Sun	Mon	Tue	Wed	Thu	Fri	Sat
1	2	3	4	5	6	7
8	9	10	11	12	13	14
15	16	17	18	19	20	21
22	23	24	25	26	27	28

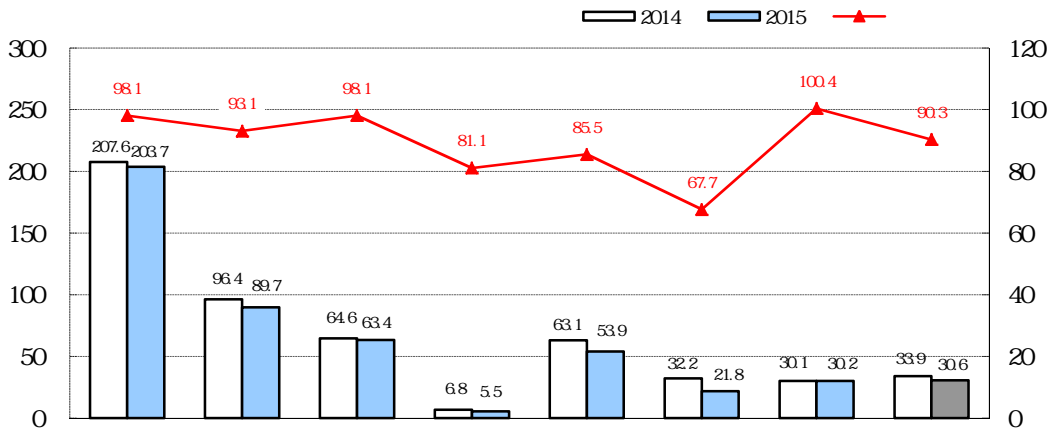
2014 2

Sun	Mon	Tue	Wed	Thu	Fri	Sat
						1
2	3	4	5	6	7	8
9	10	11	12	13	14	15
16	17	18	19	20	21	22
23	24	25	26	27	28	

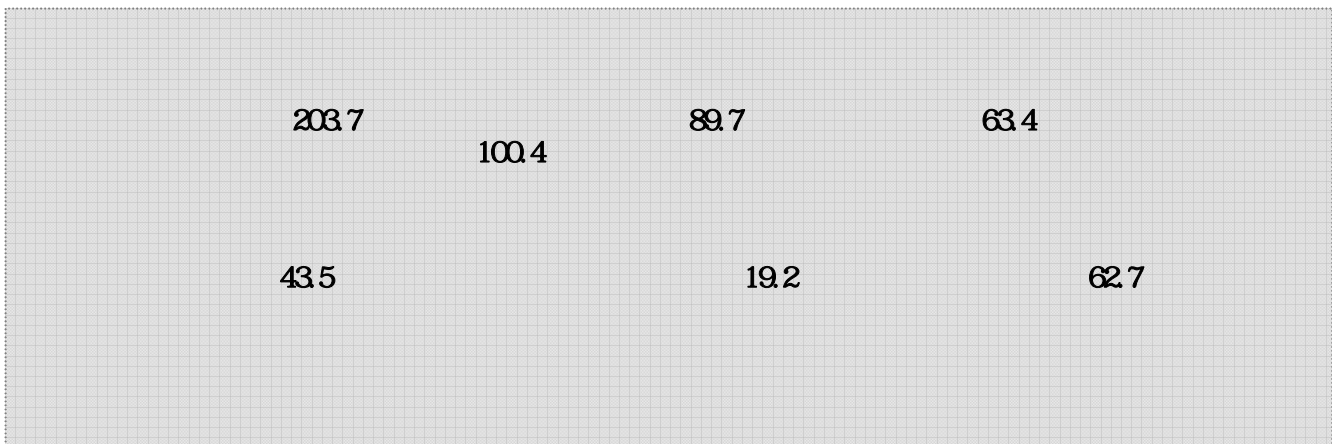
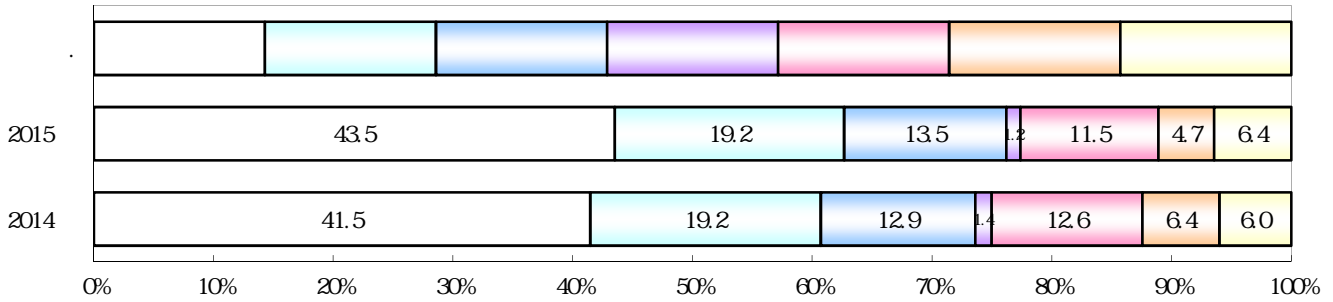




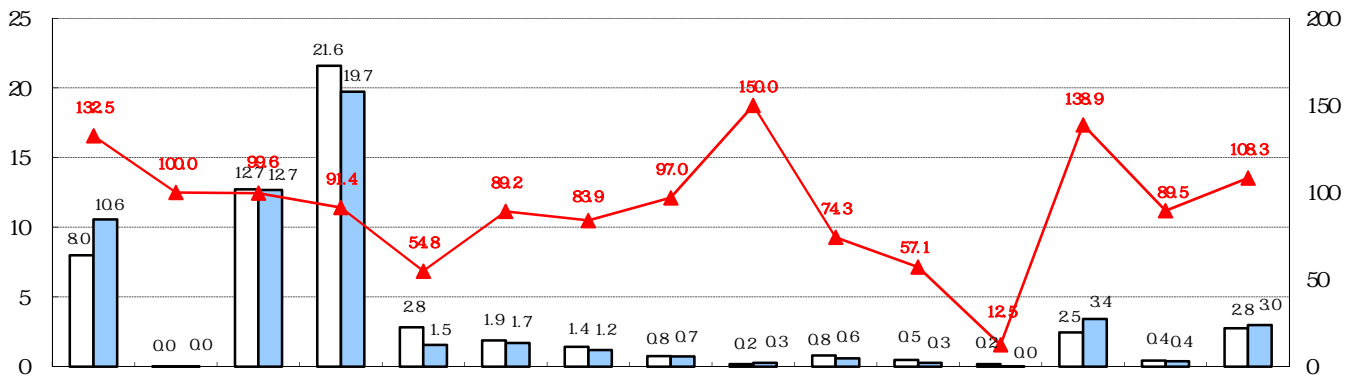
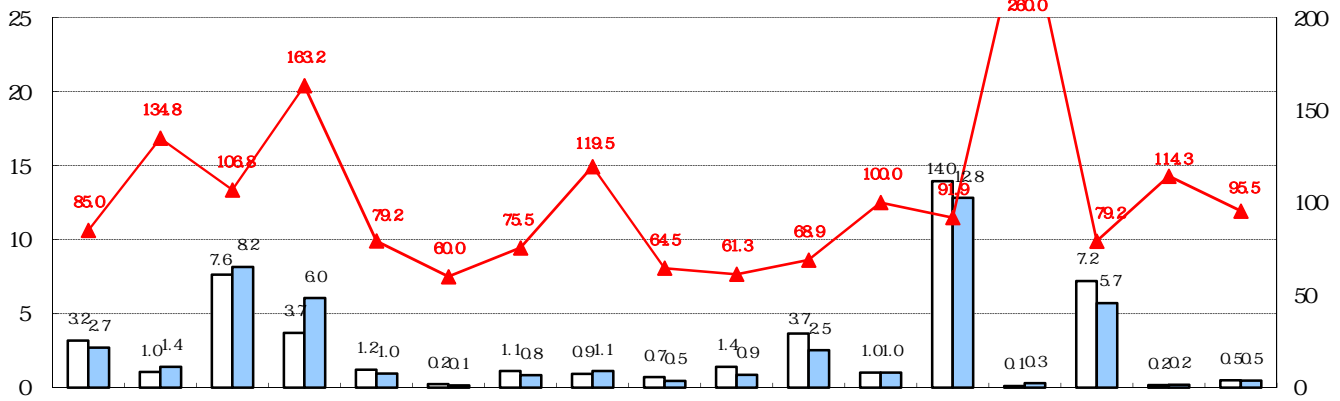
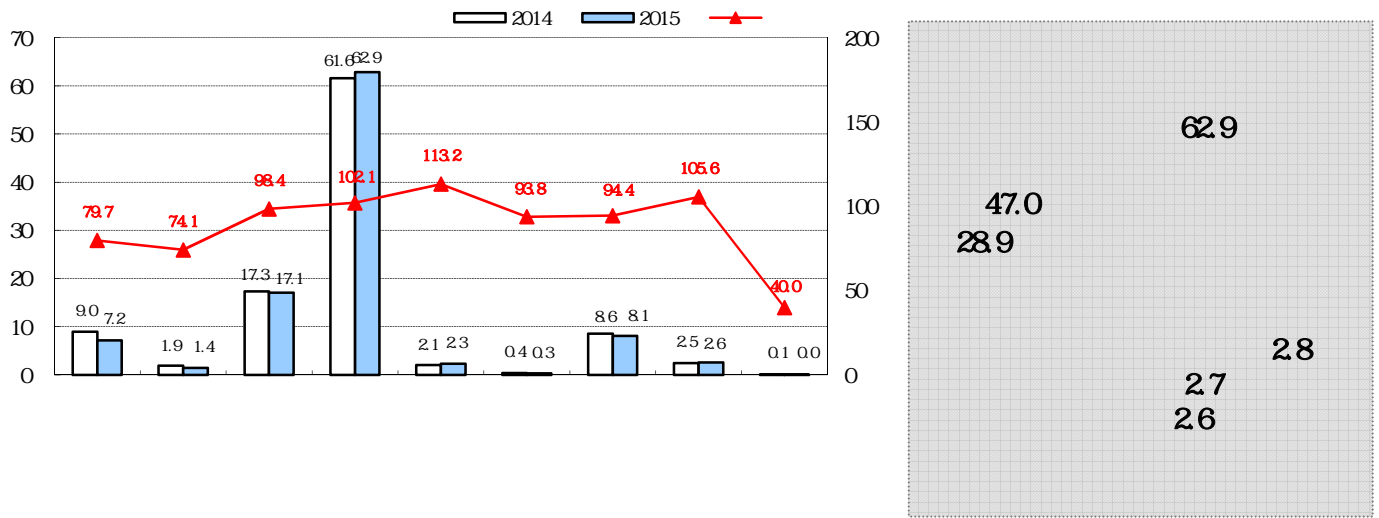
1



1

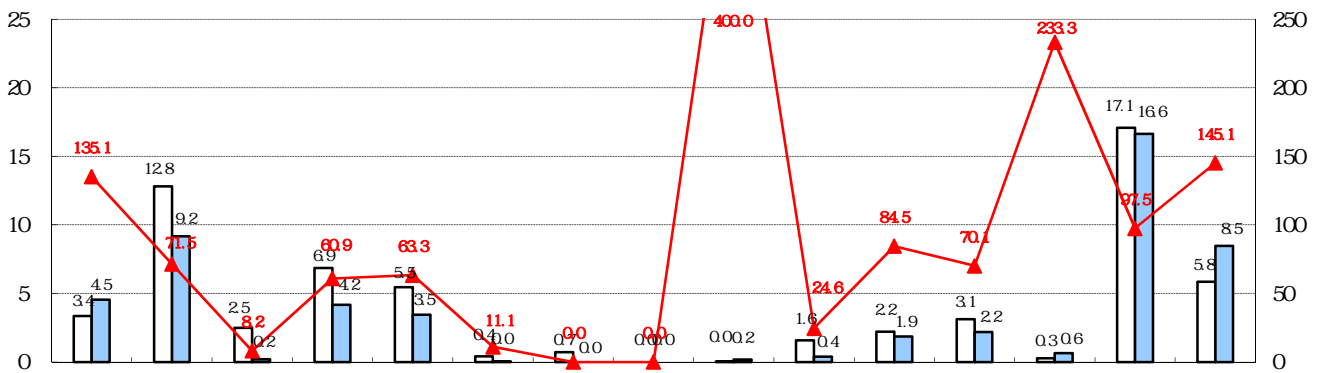
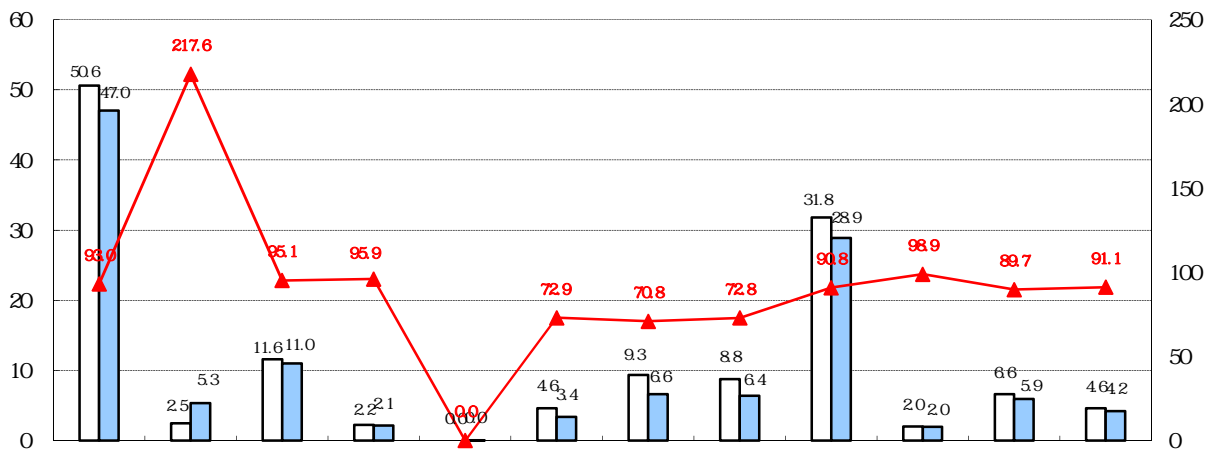
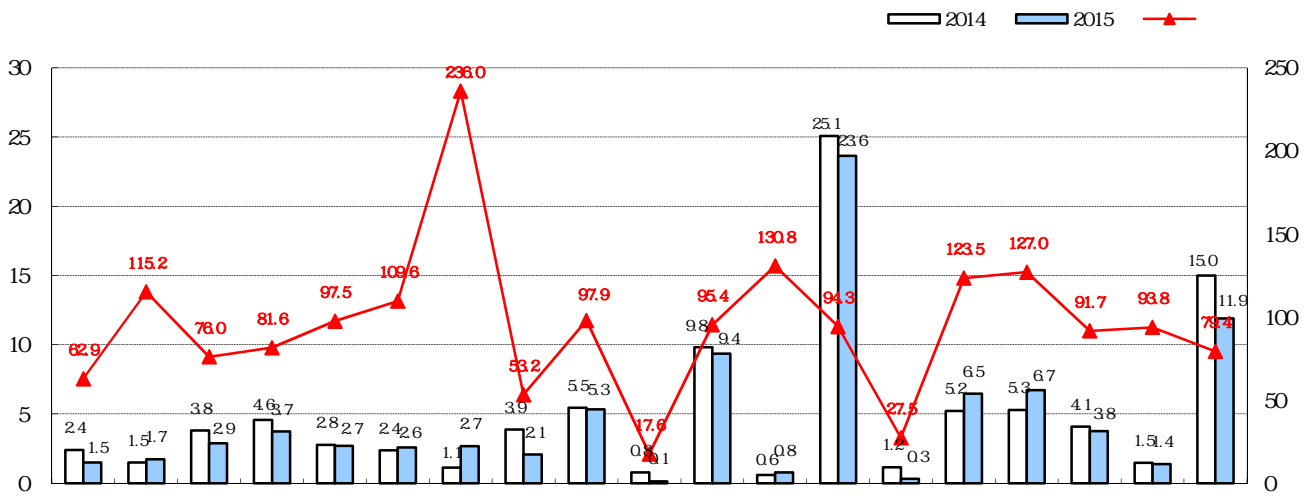


1



C
D

1



x

1

43.7
39.7

7
28

37.2
32.7

12

102

50

2/1 ()	19.3	19.8	18.7	21.4	19.2	20.7	18.3	18.0	18.3	21.0	14.5
2/2 ()	12.8	15.5	13.6	14.2	13.2	13.5	12.7	10.0	9.3	15.0	6.0
2/3 ()	18.7	16.0	17.9	20.8	19.2	17.3	19.0	20.3	23.0	20.0	13.5
2/4 ()	11.9	14.0	15.2	14.0	10.4	8.5	10.0	6.5	13.0	13.3	10.5
2/5 ()	12.0	14.5	13.2	16.2	12.4	11.2	11.0	10.3	9.3	9.3	6.0
2/6 ()	16.5	13.3	16.9	16.0	14.8	14.7	17.3	11.3	31.3	18.0	18.0
2/7 ()	37.2	34.8	36.7	39.6	40.8	33.2	43.7	34.8	43.0	40.0	24.0
2/8 ()	13.5	14.3	15.1	13.0	12.0	10.8	17.3	12.8	13.0	13.3	13.5
2/9 ()											
2/10 ()	20.1	19.8	22.0	21.6	17.6	18.0	21.7	18.3	27.3	18.3	14.0
2/11 ()	15.7	17.0	16.2	16.8	15.0	15.3	19.0	11.3	15.7	17.3	11.5
2/12 ()	10.2	11.0	10.0	14.2	9.6	9.7	7.0	9.8	11.7	11.3	5.0
2/13 ()	15.7	10.0	14.1	20.2	15.4	14.8	21.3	16.3	17.0	15.7	15.0
2/14 ()	30.6	25.3	33.1	36.2	31.0	29.3	27.0	30.8	27.7	32.0	26.5
2/15 ()	14.5	14.3	15.0	17.4	12.6	13.5	14.7	14.0	15.0	16.3	9.5
2/16 ()	14.6	17.5	16.7	16.4	16.2	13.2	12.3	11.3	12.7	16.7	4.5
2/17 ()	16.0	17.5	16.2	18.2	13.2	14.2	19.0	15.5	17.3	17.3	12.0
2/18 ()	10.7	13.3	13.6	11.0	9.2	7.8	9.0	8.5	8.3	15.7	8.0
2/19 ()	11.4	13.5	11.2	11.4	14.0	11.7	12.3	9.0	11.7	8.7	8.0
2/20 ()	15.9	16.8	14.8	16.6	16.2	14.3	18.3	15.5	17.3	17.3	14.0
2/21 ()	31.3	30.3	33.6	30.2	29.8	28.0	32.0	33.5	38.0	33.3	22.0
2/22 ()	14.2	15.8	16.2	15.2	11.8	14.0	13.3	10.3	12.0	18.0	12.0
2/23 ()	10.9	12.0	11.1	13.4	11.4	10.7	7.7	8.8	11.7	11.3	7.5
2/24 ()	15.6	15.0	17.0	18.4	16.2	15.3	13.3	14.3	15.7	15.7	8.5
2/25 ()	15.0	16.5	16.9	16.2	13.6	13.8	14.0	13.8	14.7	16.3	11.0
2/26 ()	13.5	14.3	14.6	13.0	17.2	14.7	11.0	9.5	14.3	12.3	8.5
2/27 ()	17.7	16.8	18.2	22.2	17.2	14.8	17.0	16.0	25.7	14.3	13.0
2/28 ()	32.7	30.8	34.0	39.2	32.0	28.7	29.3	30.3	39.7	36.0	23.0
	468.2	469.0	491.7	523.0	461.2	431.7	468.7	420.0	513.7	494.0	339.5
	16.7	16.8	17.6	18.7	16.5	15.4	16.7	15.0	18.3	17.6	12.1

(1)

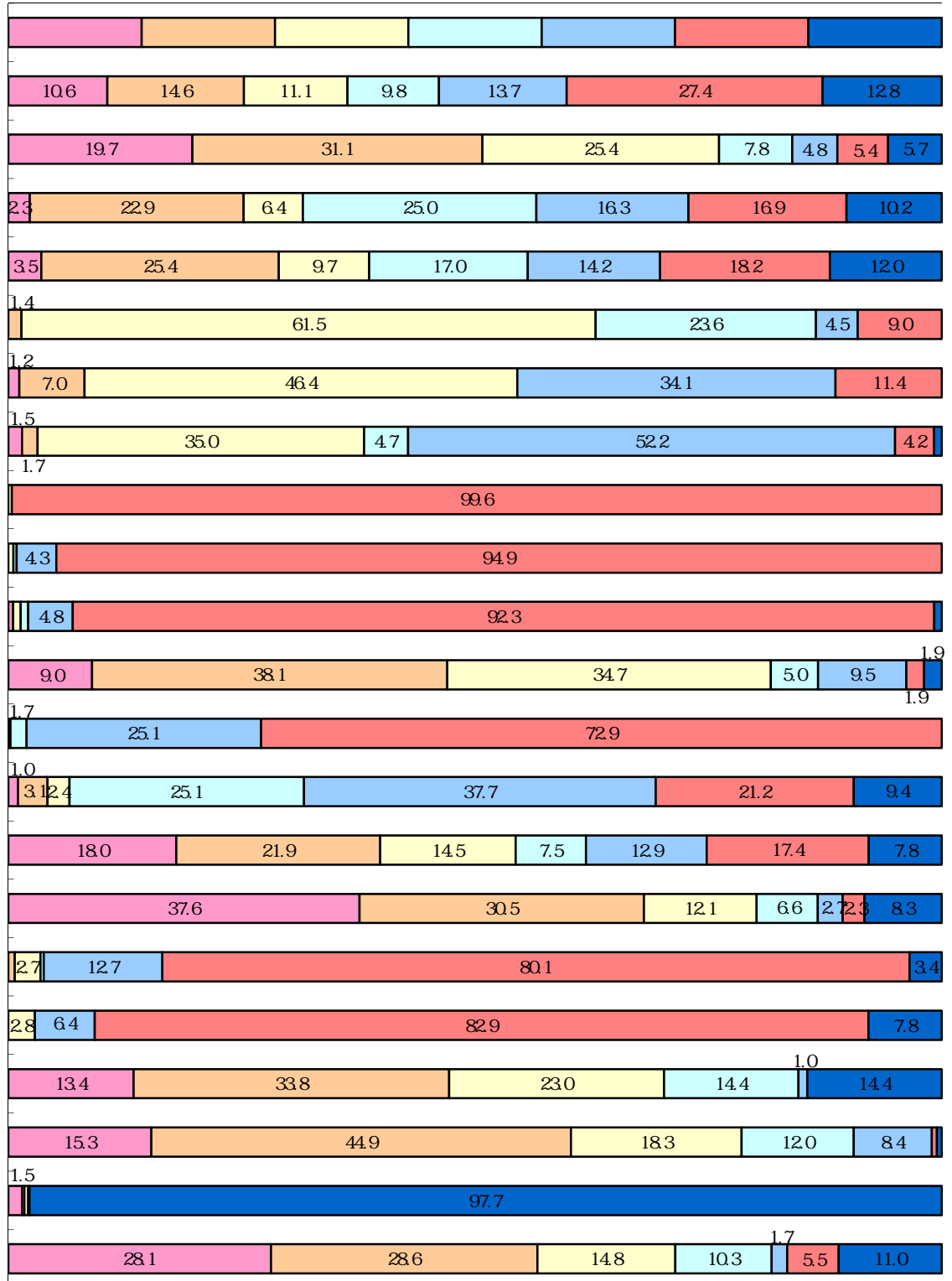
27.4

146

7

9

0% 10% 20% 30% 40% 50% 60% 70% 80% 90% 100%



*

